

Part No.	Door Count	Description	Weight
E6A	8 Doors	Enclosure with main backplate	45 lbs
E6A1	16 Doors	Enclosure with main/door backplates	48 lbs

E6 enclosure size: 30H x 23W x 6.5D



Overview

ACCLASS multi-purpose enclosures offer maximum flexibility, functionality and savings to access system designers. ACLASS enclosures are engineered to house FlexPower® power management boards alongside AMAG access panels in one compact, secure UL294 listed system. The E6A / E6A1 enclosures cover a door count from eight to sixteen with dual voltage distribution and network monitoring.

To prevent damage to system electronics, the backplate(s) separate from the enclosure for access hardware mounting in the shop while wiring is pulled to the enclosure at the job site. Once configured, the backplate can be remounted for final ties and checkout.

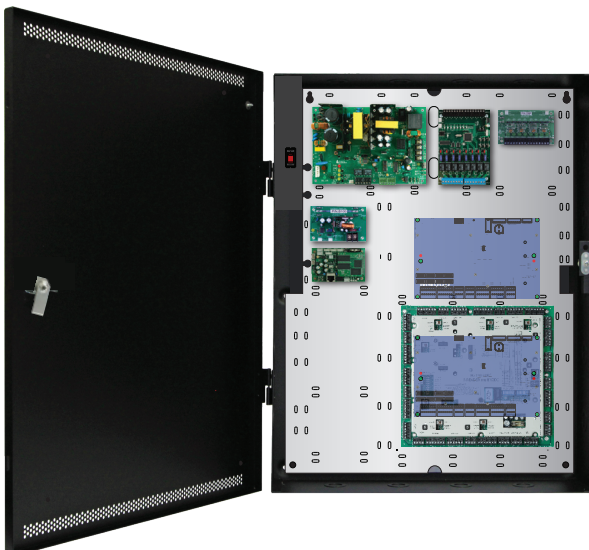
Features

- Combines power and access panels in one secure, space saving UL enclosure
- Flexible backplate pattern mounts power and AMAG controllers
- Layout optimized for maximum wire channels with tie wrap slots
- Combination AC on/off switch with circuit breaker
 - ◆ Provides safe disconnect for convenient maintenance or service
- Mirrored backplate patterns maximize configuration possibilities
 - ◆ Main backplate mounts 8DBC and 2DC for ten doors
 - ◆ Door backplate expands capability to sixteen doors with second 8DBC
- All AMAG mounting hardware provided

Mechanical refinements

- ◆ Protected AC input terminal - meets arc protection requirements
- ◆ AC on/off circuit breaker switch simplifies servicing
- ◆ Lock with two (2) keys and installed tamper switch
- ◆ 6.5" enclosure depth accommodates 12Ah battery sizes
- ◆ Removeable door with quick disconnect grounding strap
- ◆ 16 Gauge steel with LSP black textured finish
- ◆ Multiple 0.50, 1.00, 2.00" knockouts

Custom Backplate System



Flexible Mounting Pattern

Both E6A and E6A1 backplates are removable and mount one or two AMAG controllers alongside FlexPower modules in single or dual voltage configurations.

FlexPower boards mount on threaded holes and AMAG boards mount on supplied threaded standoffs.

The 6.50" cabinet depth allows various battery sizes and capacities for greater standby time.

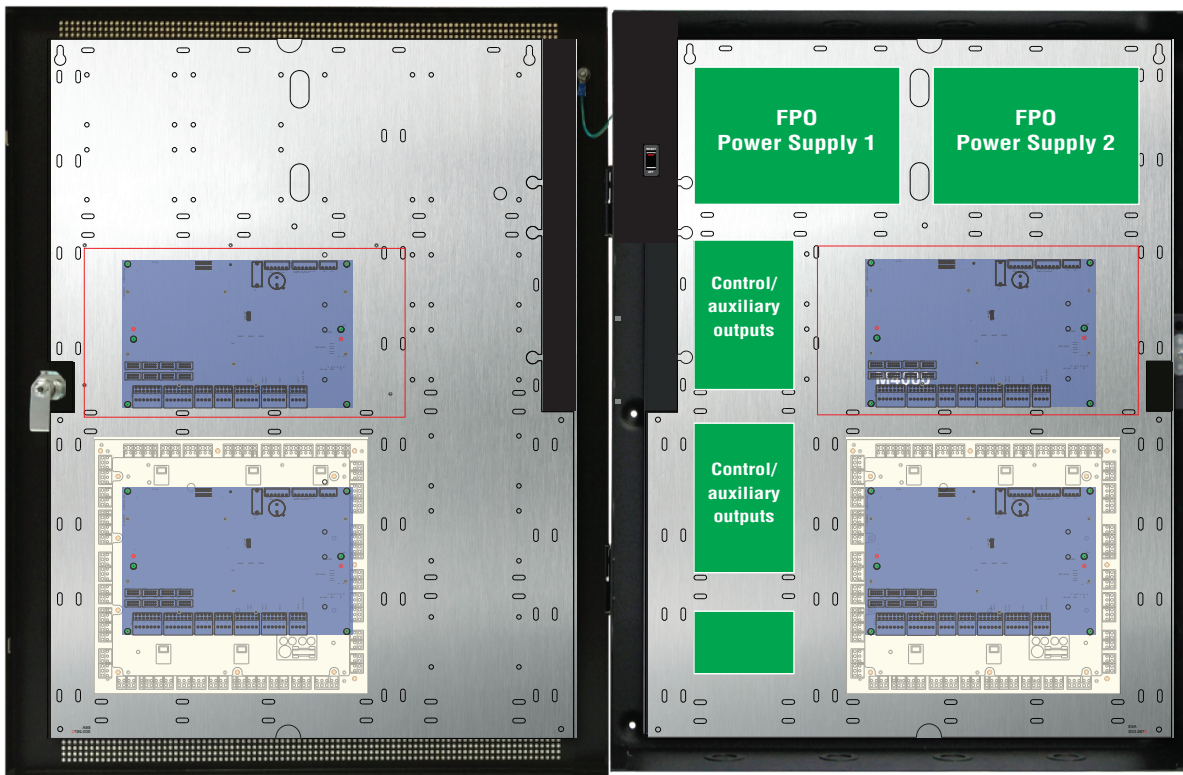
E6A / E6A1 Mounting Guide

AMAG Controller	Pattern	Mounting Slots	
		E6A main	w/E6A1 door
2DBC, 4DBC, 8DBC	Tan	1	2
2DC, 4DC	Red	1	2
M4000	Blue	2	4

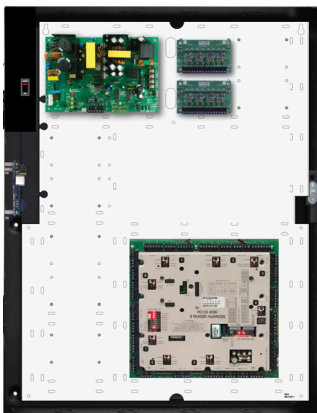
Enclosure Features

- ◆ **Custom Backplate**
 - Light weight aluminum with AC and battery slots to protect cables
 - LSP pre-wired power modules reduce installation time
 - Front side screw in standoffs simplifies panel installation
 - Wide wire management channels
- ◆ **Mechanical**
 - Protected AC cover with on/off circuit breaker for maintenance safety
 - Pre-drilled mounting holes for easy field upgrades
 - 6.5" cabinet depth accommodates large battery sets
 - Removable door with "fast disconnect" ground strap
 - Multiple knockouts all four sides

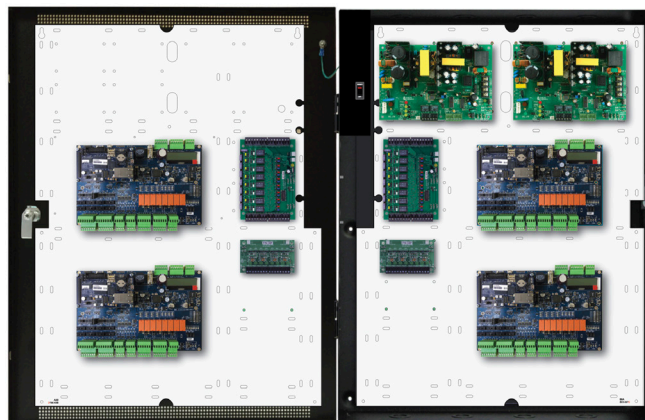
E6A, E6A1 M4000 / 2150 pattern



E6A - 8 Door 8DBC

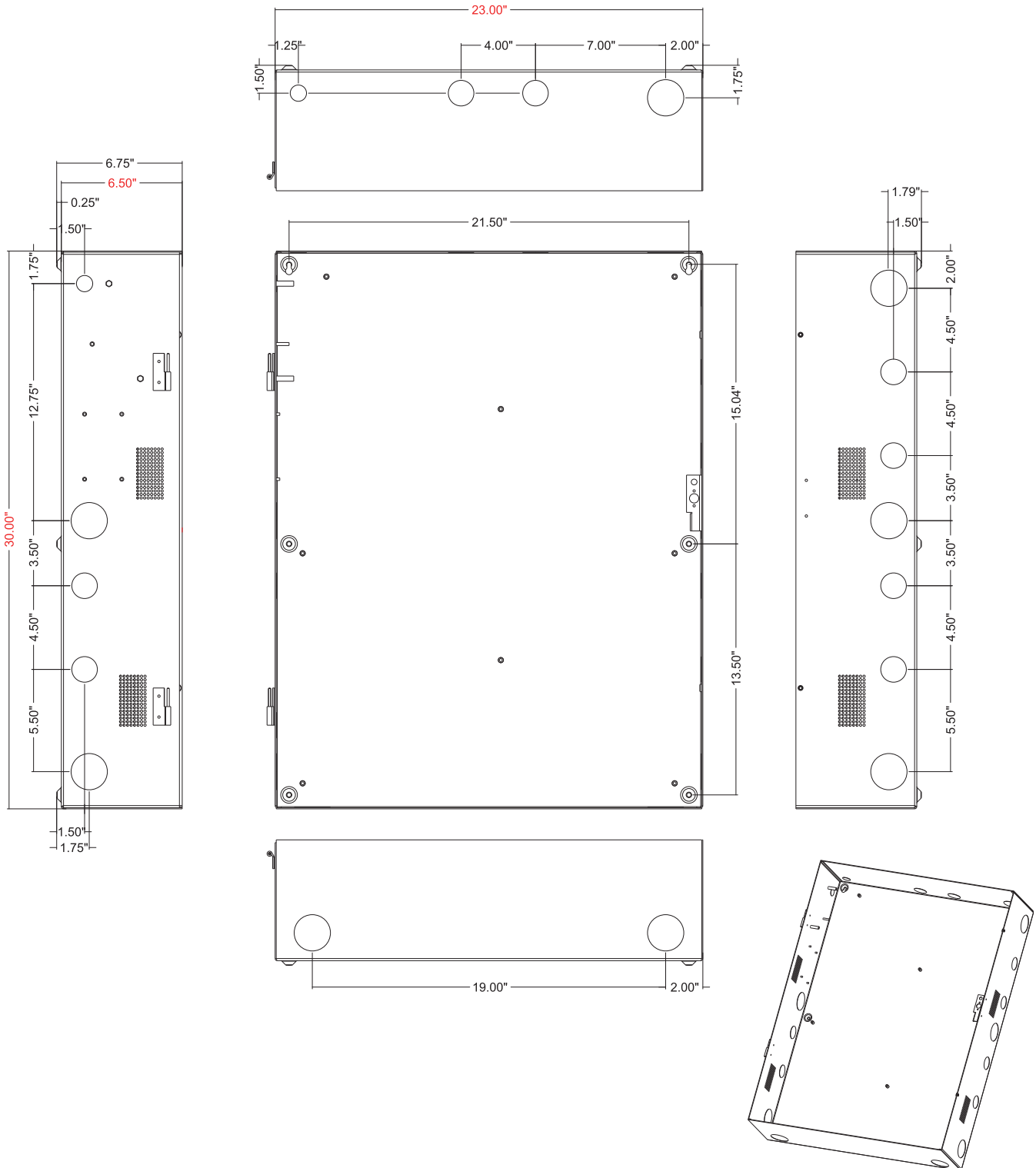


E6A1 - 16 Door M4000



E6 Mechanical Specification

30.00" x 23.00" x 6.50" (76 x 58.5 x 16.5 cm)



lifesafetypower.com

(888) 577-2898
info1@lifesafetypower.com

Specifications subject to change without notice.

© 2022 LifeSafety Power. All rights reserved. LifeSafety Power and FlexPower are registered trademarks of LifeSafety Power. All other trademarks and copyrights are the property of their respective owners.
P01-899A 05/19

LifeSafety Power
10027 S. 51st Street, Suite 102
Phoenix, AZ 85044 USA