

Part No.	Size	Weight
E4S	24"H x 20"W x 6.5"D	24 lbs.



### Overview

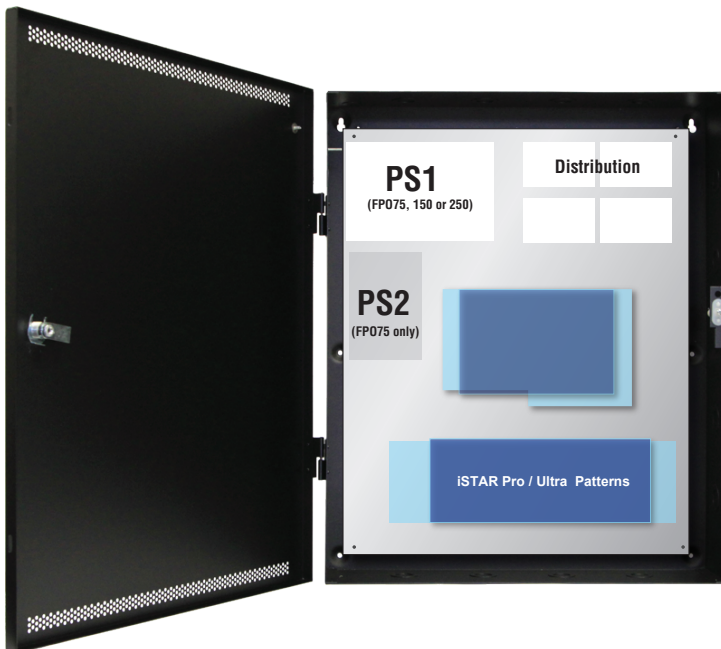
SCLASS multi-purpose enclosures offer maximum flexibility, functionality and savings to access system designers. SCLASS enclosures are engineered to house FlexPower® power management boards alongside Software House iSTAR Pro or Ultra access panels in one compact, secure system.

To prevent damage to system electronics, the backplate separates from the enclosure for access hardware mounting in the shop while wiring is pulled to the enclosure at the job site. Once configured, the backplate can be re-mounted for final ties and checkout.

### Features

- Mounts LSP power and access hardware in a variety of combinations
- Removable backplate simplifies job installation
- Pre-engineered access mounting patterns saves installation time
  - ◆ Power and distribution boards are mounted and pre-wired
  - ◆ Access boards mount on provided threaded standoffs
- Mechanical upgrades
  - ◆ Removable door with quick disconnect grounding strap
  - ◆ Lockset and tamper switch provided
  - ◆ 6.5" enclosure depth to accommodate battery area
  - ◆ 16 Gauge steel with textured black finish
  - ◆ Multiple knockouts all four sides

### Custom Backplate Mounting System



### Flexible Mounting Pattern

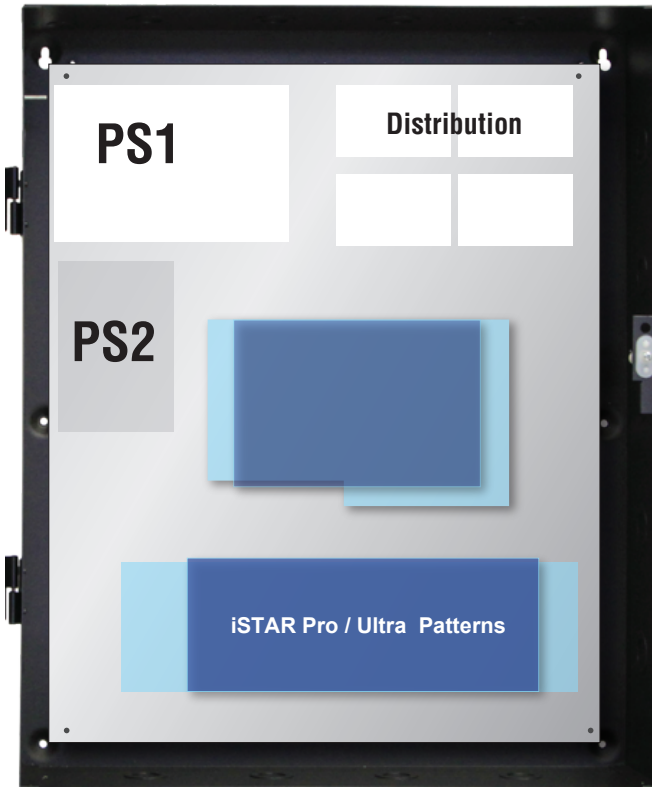
The E4S backplate is removable and mounts Software House iSTAR ULTRA SE or iSTAR ULTRA panels and FlexPower modules in both single and dual voltage configurations.

FlexPower power supply(s) and distribution boards mount on threaded studs. Software House panels mount on supplied threaded standoffs.

Battery space beneath the enclosure backplate accommodates up to four (4) 12AH batteries.

**E4S Software House Mounting Guide**

Pattern	Slot	Fits AMAG
Blue	1	iSTAR Ultra SE
Light Blue	1	iSTAR Ultra

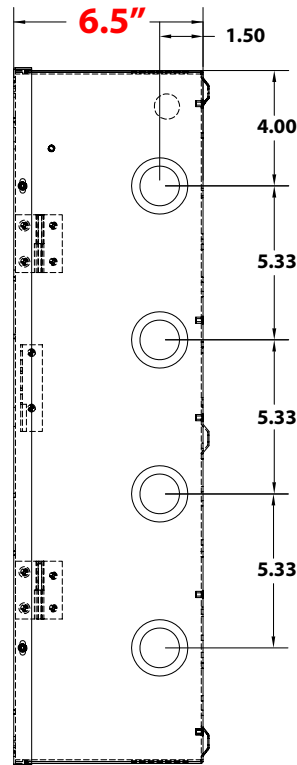
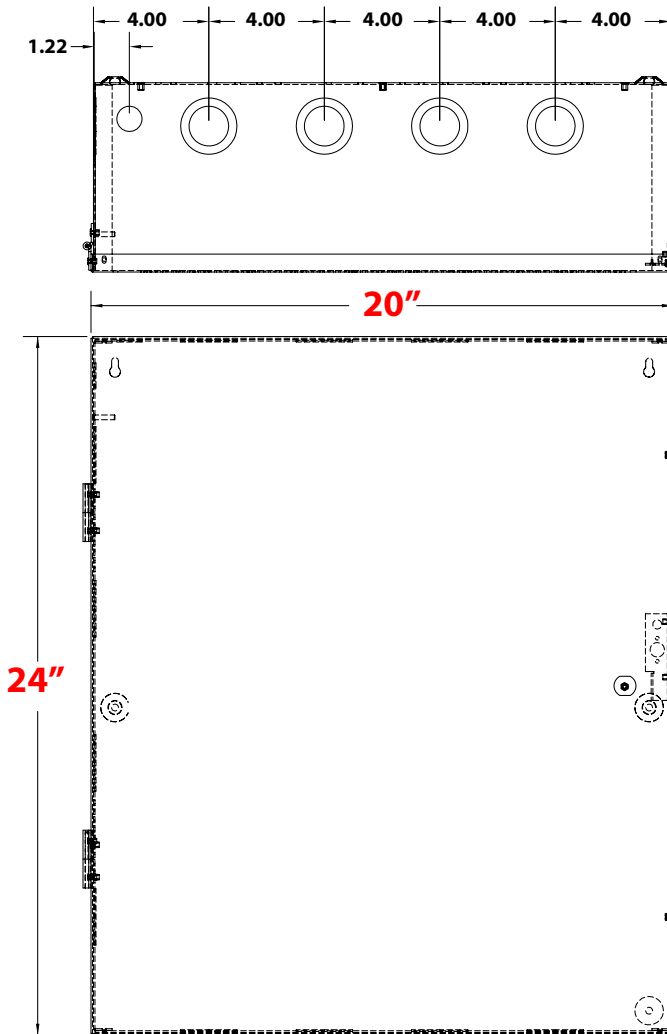
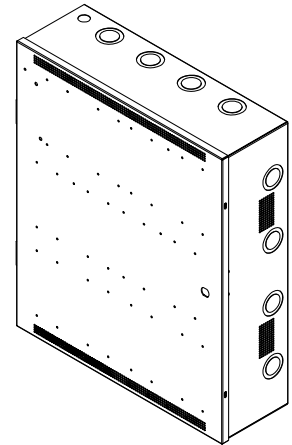


**Enclosure Features**

- ◆ **Custom Backplate**
  - Light weight aluminum with AC and battery slots to protect cables
  - LSP pre-wired power modules reduce installation time
  - Front side screw in standoffs simplifies panel installation
  - Wide wire management channels for panduit or tie wrap
- ◆ **Mechanical**
  - Pre-drilled mounting holes for easy field upgrades
  - 6.5" cabinet depth accommodates large battery sets
  - Removable door with "fast disconnect" ground strap
  - Multiple knockouts all four sides

**E4 Mechanical Specification**

**Enclosure Dimensions (H x W x D)  
24.00" x 20.00" x 6.50" (61 x 51 x 16.5 cm)**



[lifesafetypower.com](http://lifesafetypower.com)

(888) 577-2898  
info1@lifesafetypower.com

Specifications subject to change without notice.

© 2022 LifeSafety Power. All rights reserved. LifeSafety Power and FlexPower are registered trademarks of LifeSafety Power. All other trademarks and copyrights are the property of their respective owners.  
P01-768A 07/22

**LifeSafety Power**  
10027 S. 51st Street, Suite 102  
Phoenix, AZ 85044 USA