

ALERT: FPO75 Voltage Selection Jumper Change

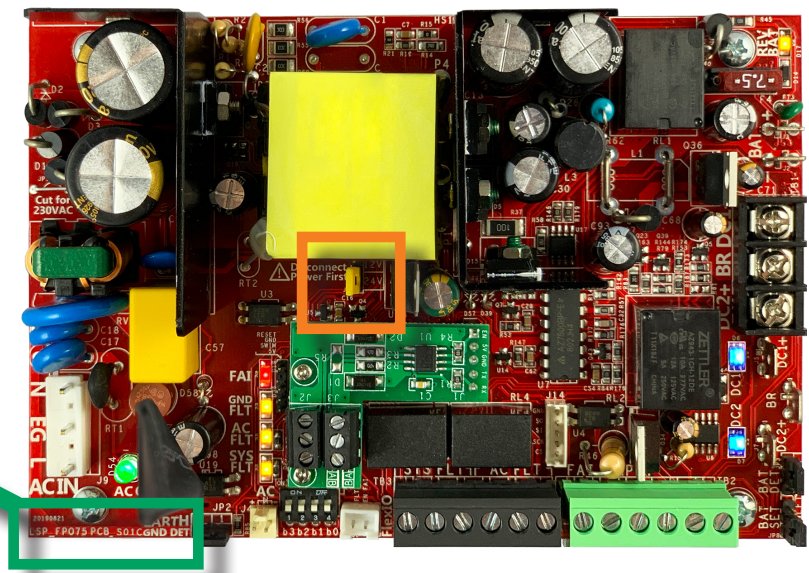
FPO75 Voltage Selection Jumper has moved to match other FPO models

To provide better consistency between models, the yellow voltage selection jumper on the FPO75 has been moved from the center of the board to the top right corner. This provides easier access and better matches the output voltage selection location of the FPO150 and FPO250.

This change is present at board revision S06 and above. See below for location of the PCB revision.

Revision S05 and below

Revision Number Location



Revision S06 and above

Revision Number Location

